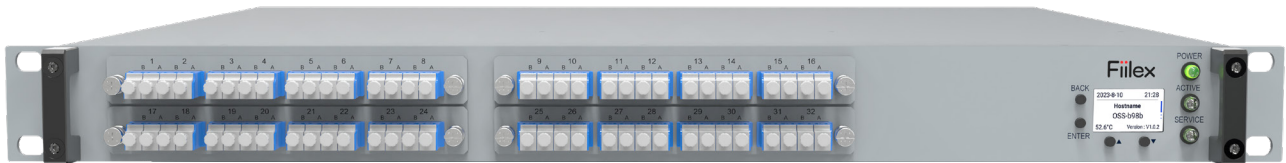


# OPTICAL MATRIX SWITCH

## 32 DUPLEX PORTS

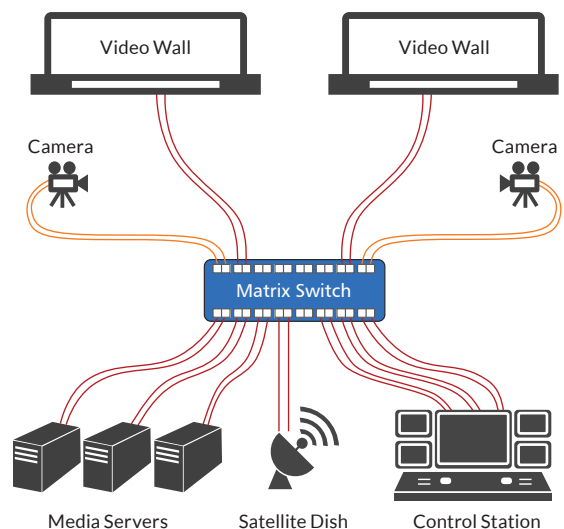
**P/N** | **OSS-32MN-LC/UPC\*** 32 Port Switch *\*Other connector options are available.*

Fiilex Media Matrix Switch is designed to provide flexible connectivity to high bandwidth video transmission networks. This switch is often used to connect different data servers and broadcast studios to a central control center, or link media storages and large display walls to Back-of-House. The switching function is performed all optically, therefore, there is minimum latency and is future-proof of any data format changes. The product is compact, silent, consumes less electricity than any traditional optical-electrical-optical (OEO) switch, and has a proven track record of reliability. As a SDN ready network device, Fiilex Matrix Switch can be managed with a proprietary Web GUI or one of several standard network protocols.



## FEATURES

- All Optical Switch
- No Latency
- Low loss
- Fast Switching Speed
- SDN Ready
- MEMS Durability



# OPTICAL MATRIX SWITCH

## 32 DUPLEX PORTS

PARAMETER	RATING
Operating $\lambda$ (nm)	1260 - 1650
Insertion Loss (dB)	2.0 max.
Crosstalk (dB)	-60 max.
Back Reflection (dB)	-45 max.
Switching Time (ms)	25 max.
Fiber Type	Singlemode, Duplex Fiber
Switch Technology	MEMS
Switch Type	Non-Blocking, Bidirectional
Operating Temp (°C)	10 to 50
Storage Temp (°C)	-20 to 60

## OPERATION

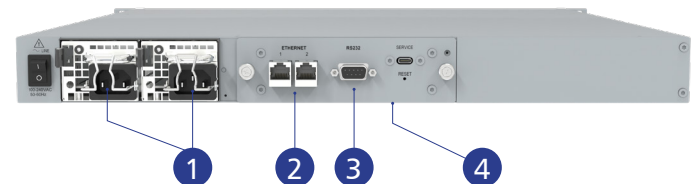
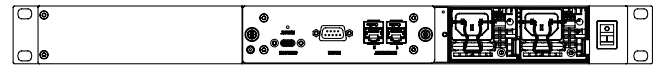
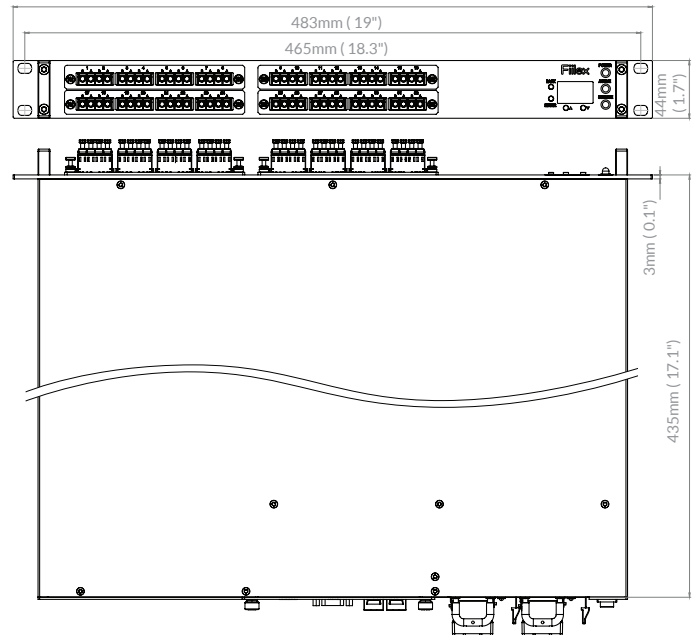
Remote Management	Web GUI, REST API, NETCONF, SNMPv3, TL1, RS232
-------------------	--

## ELECTRICAL

Power Supply	100-240 VAC, 50-60Hz, Redundant
Power Consumption (W)	25 typ.
Interface	Serial & Dual Ethernet RJ45
Control Unit	Field Replaceable

## MECHANICAL

### 1U 19" Rackmount Chassis



- 1 Redundant, Hot-Swappable AC Power Supplies
- 2 Dual Ethernet RJ45 Interfaces
- 3 Serial Interface
- 4 Field Replaceable Control Unit